

UNIMED

UDIA-HD2

— Hemodialysis Equipment —



New Generation HD Machine

Keep Dialysis Safe

Treatment Safety is Guaranteed

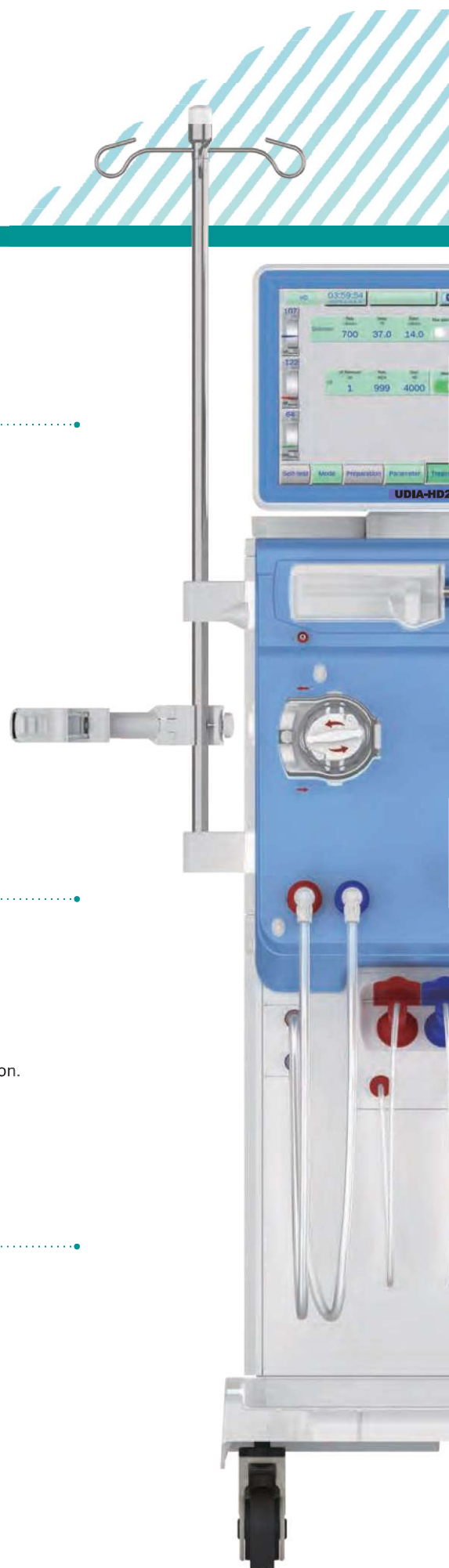
- Use integrated design of the air detector, the venous clamp and blood identification. Adopt the ultrasonic and optical sensors, can monitor continuous microbubbles and identify the blood.
- * Online noninvasive BPM to monitor heart rate and blood pressure changes of patients, allow real-time communication with the machine, and ensure patient safety during the treatment.
- Advanced balance volume feedback and control system ensures the precision of the UF.
- The dialysate mixing feedback and control system guarantees the accuracy of the dialysate ion.

Safe Self-test

- Independent control of the hydraulic, blood and monitoring systems to guarantee treatment safety.
- More than ten mandatory self-tests:
Balance system, fluid mixing system, UF system, blood circuit system...
- Balance system performs real-time leak detection to ensure accuracy of ultra-filtration.

Cost-effective

- * • Centralized supply of concentrate fluid: Centralized control is always preferred for large dialysis centers to avoid manual operation and eliminate secondary pollution of concentrate, which increases efficiency and ensures quality.



Intelligent Design



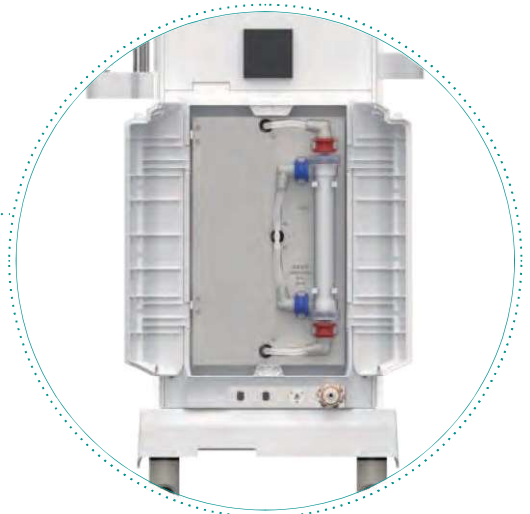
User-friendly

- The user guide, self-test, parameter setting, treatment, cleaning and disinfection functions are clearly displayed for easy operation.
- Multi-level authorization: Different setting permissions are assigned to doctors, nurses and engineers to ensure correct operation and treatment safety.
- Rotatable screen provides a large field of vision. It's quick to collect items from the tray.



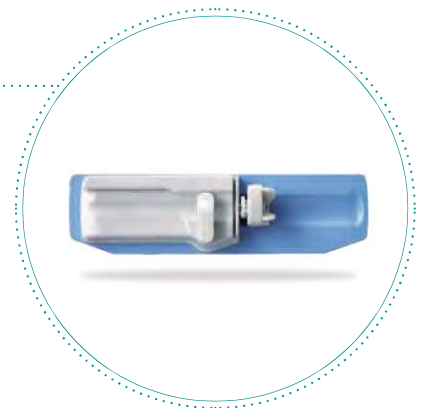
Easy Maintenance

- The auto-locking design of the front cabinet cover makes it quick to open and save maintenance time.
- The other cabinet covers adopt knobs and screws, which can be disassembled easily without instruments.
- The modular, card-style design electronic circuit board is simple to disassemble and maintain.
- Magnetic lock, French door design makes it easy to replace the dual-stage endotoxin filters.



Functional Upgrade

- Compatible with all brands of dialysis consumables, a variety of dialysate formula + customized formula, adaptable to various concentrate and disinfectant.
- Multi-functional Heparin Pump: Automatic identification of syringe model (10ml, 20ml, 30ml, 50ml), support heparin profile.

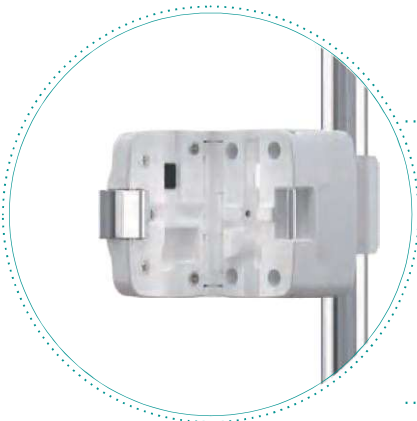


Clinical Treatment



Multiple Profiles, Tailored Treatment

- Various Sodium Profile
- UF Rate Profile
- Bicarbonate Profile
- Heparin Flow Profile
- Dialysate Flow Profile
- Dialysate Temperature Profile



* BVM

- Blood volume changes can be accurately detected during the treatment, effectively preventing hypotension caused by excessive water removal.

* RCM

- Real-time monitoring of clearance efficiency of urea to ensure treatment sufficiency.



* Bicart Holder

- Isolation of microbial contamination of B concentrate to ensure the purity of the dialysate and improve the quality of treatment.

Professional Technical Services

- Professional Technical Services: Professional technical services team provides real-time response to hospital enquiries and requirements, and can provide solutions in 24 hours, ensuring a carefree user experience with reliable technical support.
- Free Regular Training: UNIMED offers periodical trainings to medical staff for free to help them familiarize with machine operations and raise sensitivity to emergency response.



Key Feature

- ❑ **Dialysate flow from 100 to 1000 mL/min** -> while many other machines are limited to a maximum value of 700-800 mL/min.
- ❑ **Dialysate conductivity range from 12.0 to 18.0 mS/cm** -> which exceeds the range typically set in the majority of other machines.
- ❑ **Display** -> Flat, rotating 15-inch touch screen for increased readability and convenience.
- ❑ **Battery Back up** -> 40min back-up battery in the event of power outage.
- ❑ **Possibility to set specific profiles for UF, sodium (Na⁺), combined (UF and Na⁺), bicarbonate (HCO₃⁻), dialysate temperature, dialysate flow and heparin.** Not all machines have the capability to manage all these profiles, providing **UDIA-HD1 & UDIA-HDF2** with a greater degree of flexibility.
- ❑ **Heparin syringe size 10, 20, 30, 40 and 50 mL** -> Providing greater flexibility compared to other machines that can only accommodate 10, 20, and 30 mL syringes.
- ❑ **UF rate from 0 to 6000 mL/h** -> surpassing the maximum values of 4000-5000 mL/h commonly set in many other machines.
- ❑ **Leakage sensor** -> **UDIA-HD1 & UDIA-HDF2** machines are equipped with this sensor by default, which is not present in all other machines.
- ❑ **Blood flow rate 0 – 650 mL/min** -> Surpassing the maximum value of 600 mL/min typically set as maximum value in many other machines.
- ❑ **AP/VP/TMP sensors range from -700 to 800 mmHg ±5 mmHg** -> which surpasses the narrower range typically provided by many other machines.
- ❑ **Kt/V calculated by a direct estimation of the urea using an UV sensor providing accurate measurements of urea levels.** In comparison, some other machines calculate Kt/V based on conductivity measurements.

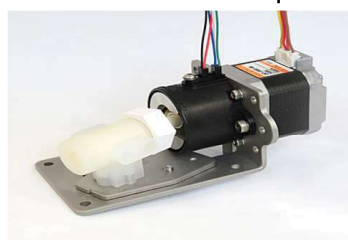
Major Components:

Balancing Chamber & Two Way Solenoid Valve



Made in Germany

Concentrate Pump



Made in Germany

Gear Flow Pump



Made in Italy

UNIMED

Dialysis Machine of UNIMED



UDIA-HD1



UDIA-HD2



UDIA-HDF2

Technical Data

Blood pump	
Blood Flow Rate	0, 30 to 650 ml/min; Accuracy: $\pm 10\%$ ml/min or $\pm 10\%$ of whichever is greater
Heparin pump	
Heparin Pump Flow	0 to 10 ml/h; Accuracy: ± 0.2 ml/h or 5% of whichever is greater
Heparin Pump Flow Resolution	0.1 ml/h
Syringe Size	10 ml , 20 ml , 30 ml , 50 ml
Dialysis Fluid and Conductivity	
Dialysate Flow	0, 100 to 1000 ml/min; Accuracy: $\pm 5\%$
Dialysate Flow Resolution	1 ml/min
Dialysate Temperature	33°C to 40°C; Accuracy: 0.5%°C
Dialysate Conductivity	12.0 to 18.0 mS/cm; Accuracy: ± 0.1 mS/cm
Ultrafiltration Control	
UF Rate	0 to 6000ml/h
Monitoring System	
Venus Pressure	-700 to 800mmHg; Accuracy: ± 5 mmHg
Arterial Pressure	-700 to 800mmHg; Accuracy: ± 5 mmHg
TMP	-700 to 800mmHg; Accuracy: ± 5 mmHg
Blood Leakage Monitor	≥ 0.35 ml/min Blood at HCT of 32%
Air Detector	≥ 0.02 ml Bubbles or ≥ 0.0003 ml continuous small bubbles
Disinfection and Cleaning	
Rinse	Water / 37°C
Hot Rinse	Water / 93°C
Decalcification	20% - 30% - 50% Citric Acid / 37°C
Thermal Disinfection	20% - 30% - 50% Citric Acid / 93°C
Chemical Disinfection	5% - 10% Sodium Hypochlorite / Room Temperature
Blood Pressure Monitoring	
Blood Pressure	0 to 300 mmHg
Resolution	1 mmHg
Pulse Monitoring Range	30 to 220 bpm
Pulse Monitoring Accuracy	± 3 bpm or $\pm 2\%$ of whichever is greater
Dimensions and Weight	
Dimensions	1515 x 465 x 785 mm
Weight	Approx. 87 kg
Water Supply	
Pressure	0.5 to 8.0 bar
Temperature	5 to 30°C
Power Supply	
Main Voltage	100 to 240V AC
Frequency	50 / 60 Hz
Back-up Battery	40 min
Running Environment	
Temperature	10°C to 40°C
Humidity	$\leq 85\%$
Atmospheric Pressure	70 kPa to 106 kPa (700 to 1060mbar)
Protective grade	IP X 1
Heater Power	1800W

Australia Office

Unimed Pty Ltd
Sector Serviced Offices
3/2 Brandon Park Dr,
Wheeler Hill,
VIC 3150 Australia.

USA Office

Unimed Pty Limited
8969 215TH PL
Queens Village,
Queens, NY, 11427
USA.

Hong Kong Office

Unimed Pty Limited
1003, 10/F, Office Tower 2
Grand Plaza 625 and 639
Nathan Road, Kowloon
Hong Kong.

Turkey Office

Unimed Pty Limited
Merkez Mah. Seçkin Sok.
Dap Vadisi Z Ofis No2-4
A İç Kapı No:304 Kağıthane
İstanbul, Türkiye.

Email: info@unimed-ltd.com
Web : www.unimed-ltd.com

